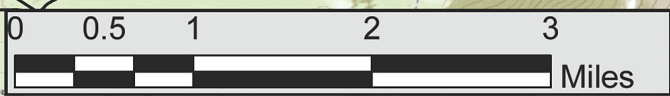




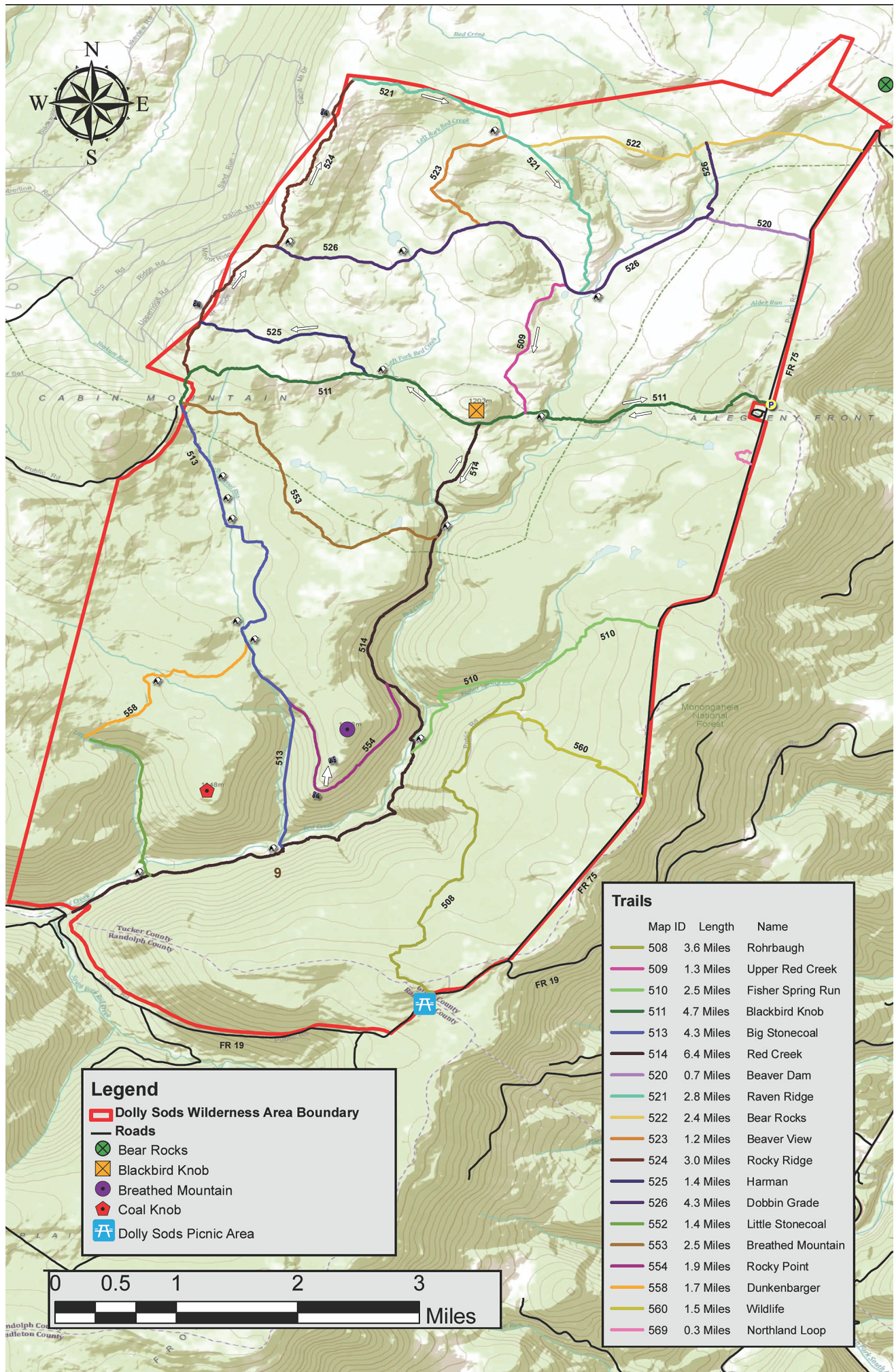
**Legend**

- Dolly Sods Wilderness Area Boundary
- Roads
- Bear Rocks
- Blackbird Knob
- Breathed Mountain
- Coal Knob
- Dolly Sods Picnic Area



**Trails**

Map ID	Length	Name
508	3.6 Miles	Rohrbaugh
509	1.3 Miles	Upper Red Creek
510	2.5 Miles	Fisher Spring Run
511	4.7 Miles	Blackbird Knob
513	4.3 Miles	Big Stonecoal
514	6.4 Miles	Red Creek
520	0.7 Miles	Beaver Dam
521	2.8 Miles	Raven Ridge
522	2.4 Miles	Bear Rocks
523	1.2 Miles	Beaver View
524	3.0 Miles	Rocky Ridge
525	1.4 Miles	Harman
526	4.3 Miles	Dobbin Grade
552	1.4 Miles	Little Stonecoal
553	2.5 Miles	Breathed Mountain
554	1.9 Miles	Rocky Point
558	1.7 Miles	Dunkenbarger
560	1.5 Miles	Wildlife
569	0.3 Miles	Northland Loop



## Blackbird Knob Loop – Dolly Sods, WV

Length	Difficulty	Streams	Views	Solitude	Camping
14.6 mls	★	★	★	★	★
<b>Hiking Time:</b> 7.5 hours with half hour for lunch <b>Elev. Gain:</b> 1,973 ft <b>Parking:</b> Park at the Blackbird Knob trailhead, next to the Red Creek Campground on FR75. 39.03348, -79.31424					

[Click Here For Detailed Location](#)



This is a longer hike that combines features of Dolly Sods North and Forks of Red Creek for an extended loop which hits the major attractions of northern Dolly Sods, including waterfalls and swimming holes along Red Creek as well as sweeping vistas and rugged highlands along Rocky Ridge and Raven Ridge. This route can be completed as a single all-day hike or as a more leisurely out-and-back overnight trip. Boggy sections of trail are unavoidable in Dolly Sods so gaiters are recommended, although this hike specifically avoids the notoriously wet Dobbin Grade Trail. Be aware that weather on the Dolly Sods plateau can change rapidly, so pack accordingly. The US Forest Service provides a webcam view and meteorology reports for Dolly Sods online that you can use to check the latest conditions.

- ▶ **Mile 0.0** – Cross Fire Road 75 to the Blackbird Knob trailhead (Tr #511), marked by a large notice board. Start the hike by following a short boardwalk as the trail enters the Dolly Sods Wilderness Area.
- ▶ **Mile 1.0** – The trail veers left at a wooden trail sign shortly before opening onto several small clearings with views to the southwest. After descending into a small valley, cross Alder Run at a small campsite with several stone chairs.
- ▶ **Mile 1.6** – The trail skirts a low ridge before crossing Red Creek. The crossing point features a waist-deep pool and several good campsites, including a few on an oxbow island in the middle of the stream. Red Creek can run high at times, so be prepared to wade across if necessary.
- ▶ **Mile 1.8** – Shortly after crossing Red Creek come to an ‘intersection’ marked by several medium sized rocks in the trail. Take an immediate left and follow a set of cairns up a rock staircase. The trail will emerge onto an open clearing and an intersection with Upper Red Creek Trail (Tr #509) to the right, which you will return on later. Stay on Blackbird Knob Trail and continue straight across the clearing.
- ▶ **Mile 2.1** – Turn left onto Red Creek Trail (Tr #514) at the intersection with Blackbird Knob Trail for a short (~1.8 mile round trip) detour to the Forks at Red Creek.
- ▶ **Mile 3.0** – Pass through several meadows before reaching the Forks of Red Creek, where the two creek branches draining central Dolly Sods merge into a broad waterfall and large pool. The pool is an excellent spot to cool off in the summer with numerous campsites available along the riverbank. After enjoying the Forks, return back up Red Creek Trail to the intersection with Blackbird Knob Trail and turn left to continue following Blackbird Knob Trail west.
- ▶ **Mile 4.6** – The trail crosses the Left Fork of Red Creek at a small clearing. Several good campsites are located in the trees and along the creek bank. The trail further on is more exposed with fewer water sources, so this is a good spot to overnight if backpacking.
- ▶ **Mile 6.2** – Cross the Left Fork and in 300 yards reach an intersection with Harman Trail (Tr #525). Turn right onto Harman Trail and follow it through scattered meadows and mountain laurel to an intersection with Rocky Ridge Trail (Tr #524) on the western edge of the Dolly Sods. Turn right and follow Rocky Ridge Trail north along the ridgeline.
- ▶ **Mile 6.5** – The Canaan Valley opens up to the west as the trail reaches the peak of Rocky Ridge. This is the highest point on the hike at ~4180 feet above sea level. Numerous rock piles and weathered sandstone outcroppings dot the ridge line. Continue straight at an intersection with Dobbin Grade (Tr #526) and follow the ridge line as the trail passes through larger weather-carved rock formations, several of which provide dramatic views of Canaan Valley.
- ▶ **Mile 8.2** – The trail leaves the rock formations for the rugged, windswept highlands of the northern Sods. The signature landscape of the Dolly Sods, this harsh, rocky landscape is more reminiscent of New England or Canada than the forests of the mid-Atlantic. Looking back towards the south offers views along the crest of Rocky Ridge and across the Red Creek valley at the center of the Dolly Sods plateau.
- ▶ **Mile 8.6** – Reach the northwest border of the Dolly Sods Wilderness Area and private property to the north. Turn right onto Raven Ridge Trail (Tr #521).
- ▶ **Mile 10.0** – The trail makes a signed detour through spruce woods before emerging on open meadows with views of the upper Dolly Sods. Beaver View Trail (#523) eventually intersects the trail from the south. Stay straight on Raven Ridge Trail. 350 yards after the intersection with Beaver View Trail, keep right at the intersection with Bear Rocks Trail (Tr #522) and continue following Raven Ridge Trail as it curves southeast.
- ▶ **Mile 10.8** – Descend into the Red Creek valley at the center of the Dolly Sods. This section of trail boasts panoramic views of the central plateau as the trail follows the tail end of the ridge into the valley.
- ▶ **Mile 11.5** – At the bottom of the ridge Raven Ridge Trail ends at an intersection with Dobbin Grade Trail (Tr #526). Turn right onto Dobbin Grade and follow it a short distance before turning left onto Upper Red Creek Trail (#509). The trail immediately crosses Upper Red Creek and then climbs up a short gully with several views back to the north across the Red Creek valley. A campsite is located a few hundred yards up the hill within the trees.
- ▶ **Mile 12.4** – The trail crosses a boggy section before coming to an intersection with an unofficial trail, which continues south towards the summit of Blackbird Knob. Make a hard left to continue following Upper Red Creek Trail.
- ▶ **Mile 12.8** – The trail intersects with Blackbird Knob at the clearing previously visited at Mile 1.8. Turn left onto Blackbird Knob Trail to return towards the Blackbird Knob parking lot.
- ▶ **Mile 13.0** – Descend the stone staircase and cross Red Creek, and in another half mile cross Alder Run as the trail continues east.
- ▶ **Mile 14.6** – Finish the hike at the Blackbird Knob parking lot starting point.